

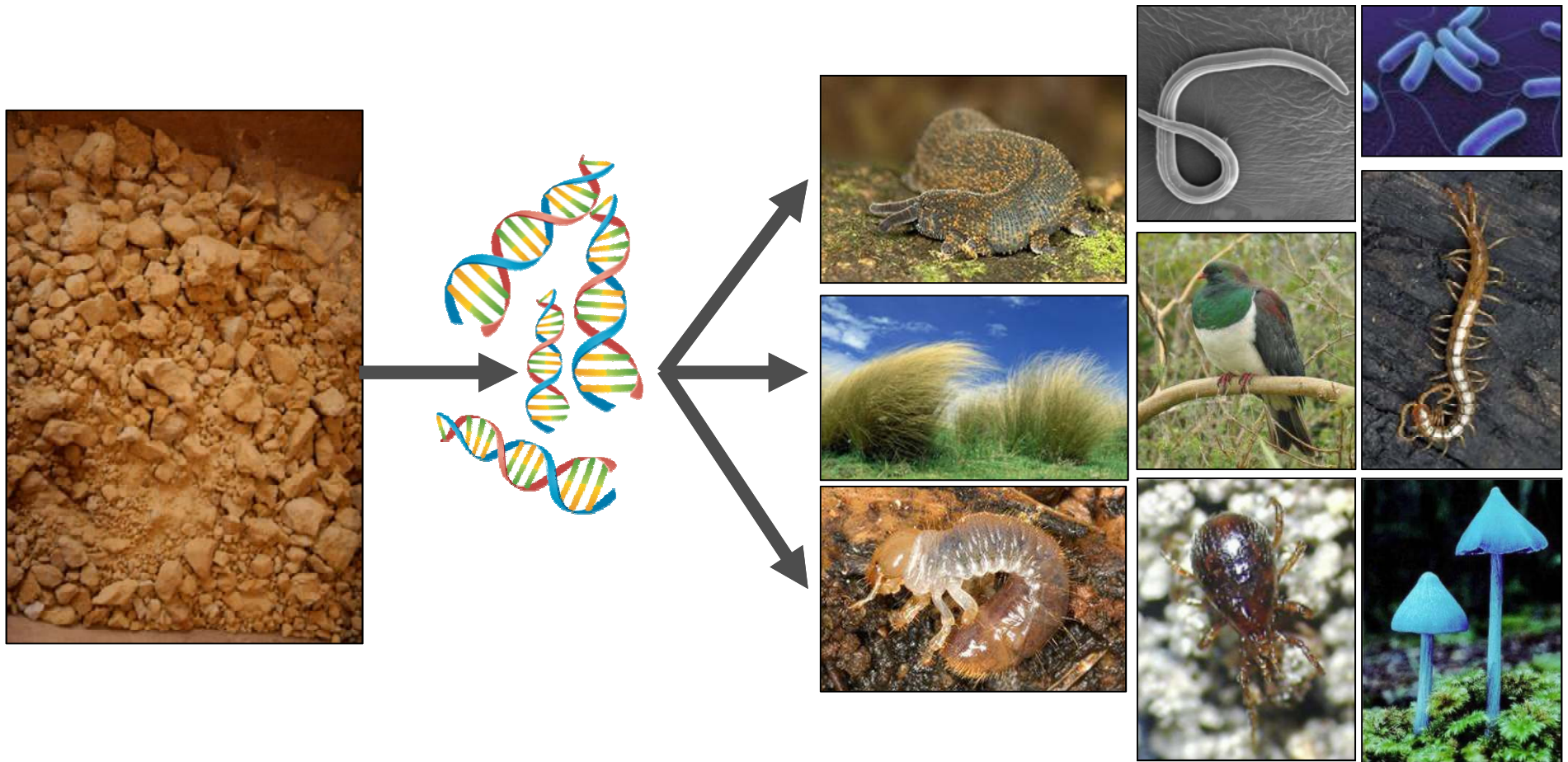
A DNA-based wetland assessment and monitoring tool

**Jamie Wood, Janet Wilmshurst,
Sarah Richardson, Olivia Burge,
Hugh Robertson, Michelle
McKeown, Bev Clarkson**

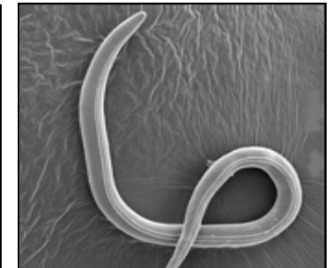
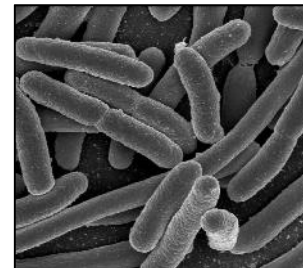
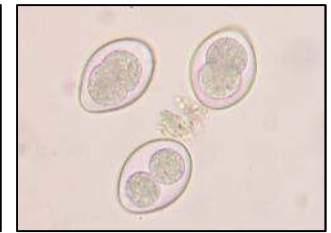
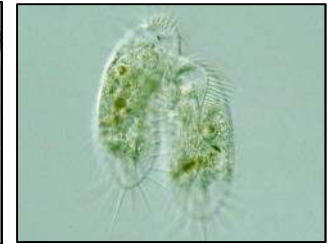
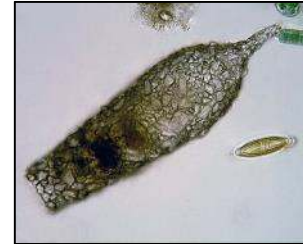


Manaaki Whenua
Landcare Research

Environmental DNA (eDNA)



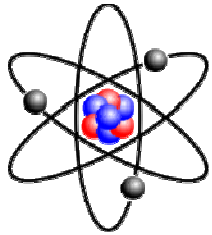
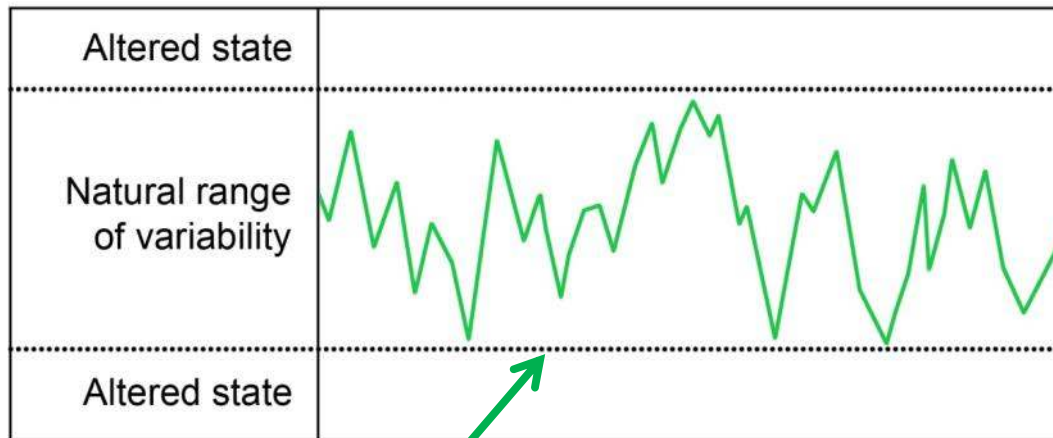
eDNA in wetlands



Ancient eDNA in wetlands



Past





Wetland Assessment and Monitoring Tool (WAAM)

<http://ltel.landcareresearch.co.nz/research/conservation-palaeoecology/waam>



Funding provided by

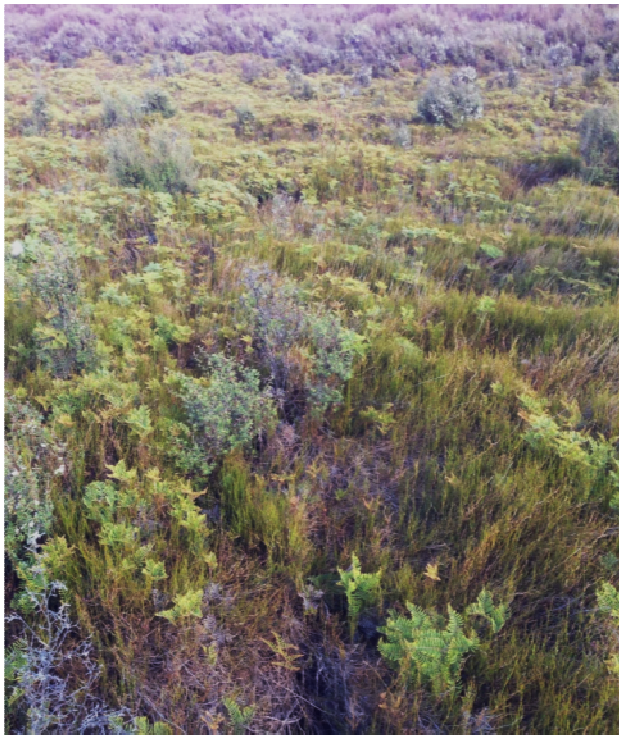


**MINISTRY OF BUSINESS,
INNOVATION & EMPLOYMENT**
HĪKINA WHAKATUTUKI

Wetland condition gradient

Awarua

WCI = 21.67



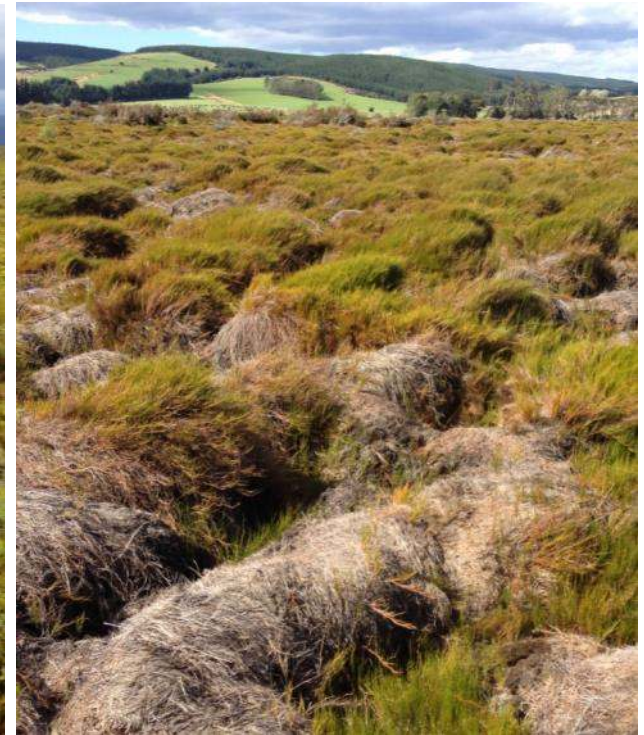
Bayswater

WCI = 19.05



Dunearn

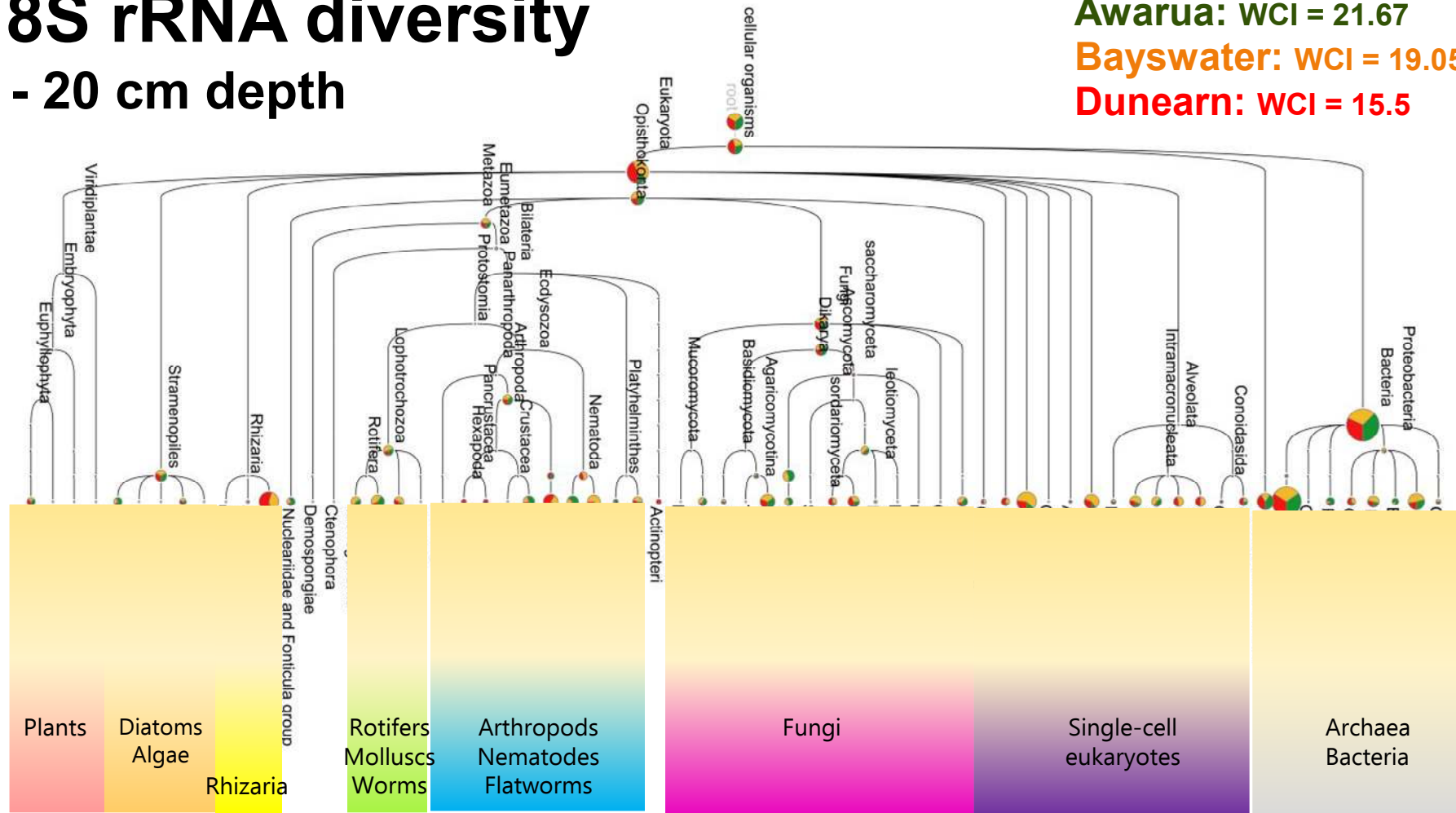
WCI = 15.5



18S rRNA diversity

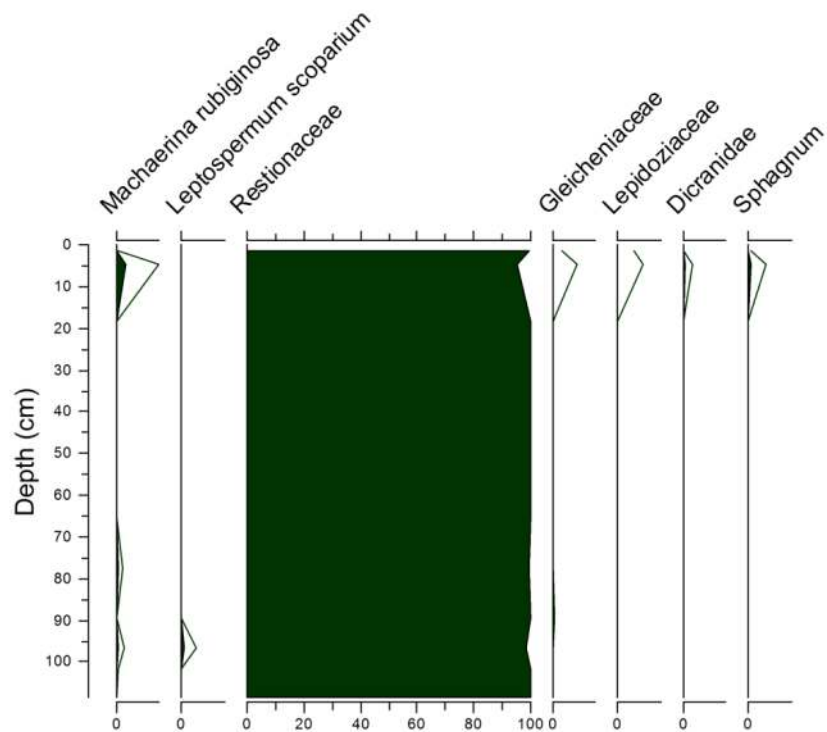
0 - 20 cm depth

Awarua: WCI = 21.67
 Bayswater: WCI = 19.05
 Dunearn: WCI = 15.5



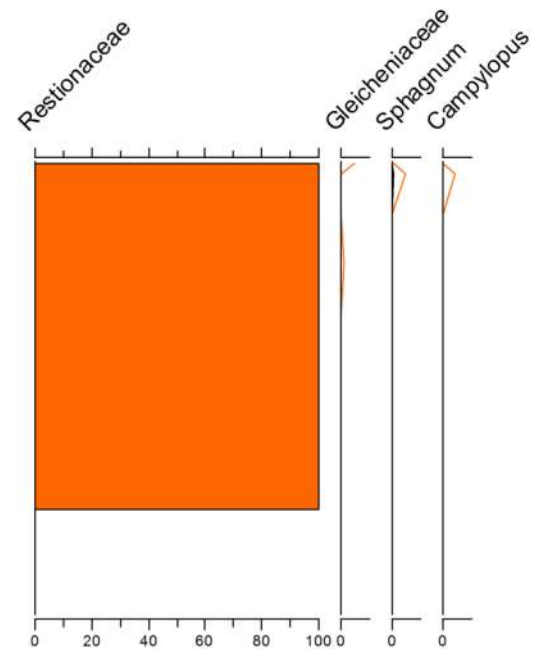
Plant DNA

Awarua

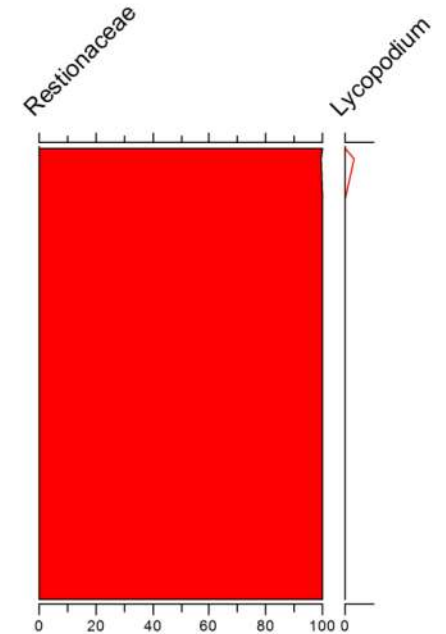


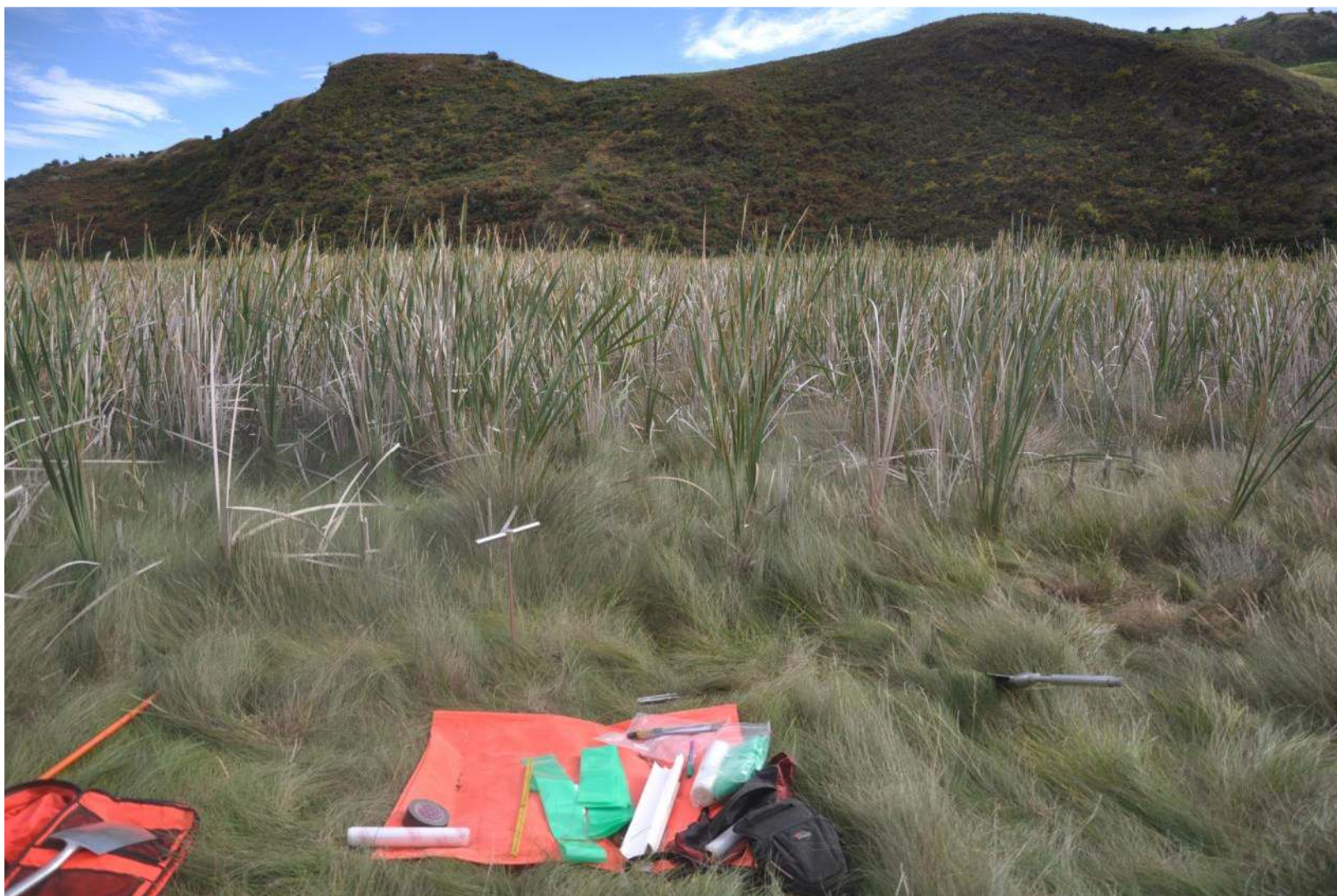
Percentage of DNA reads

Bayswater



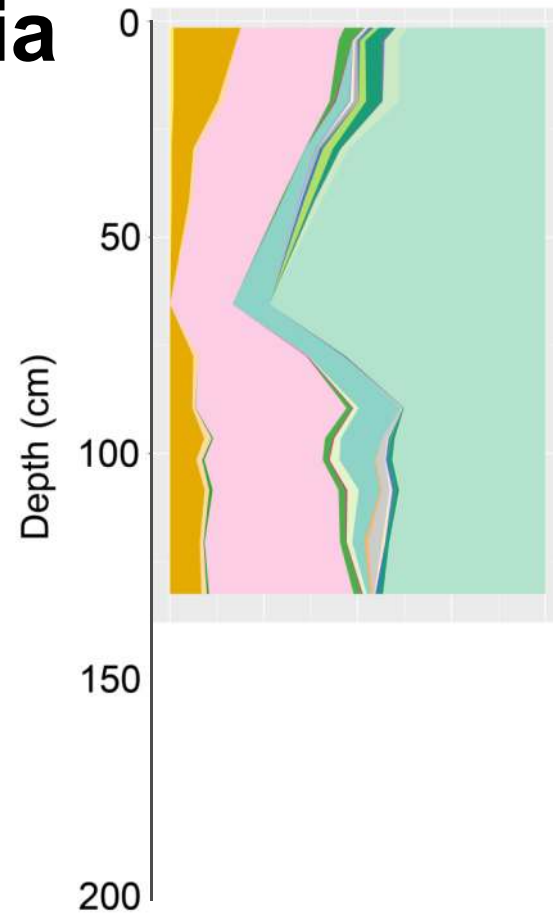
Dunearn



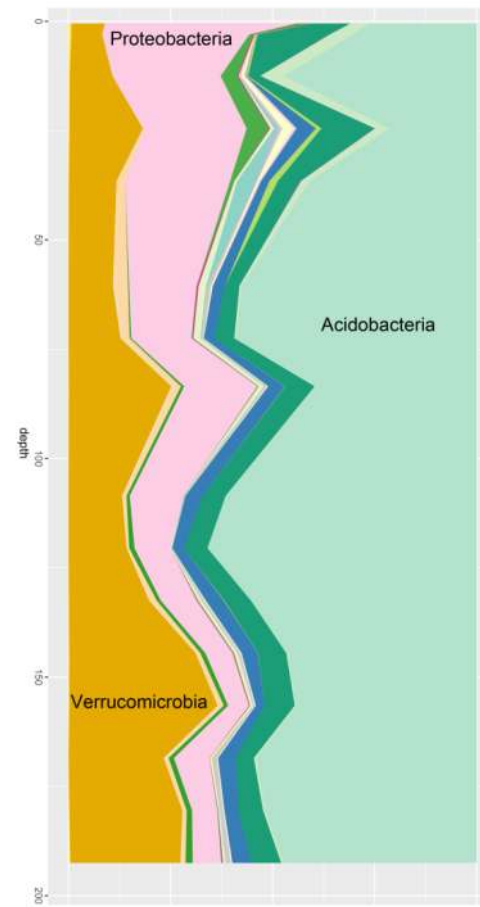


16S rRNA bacteria

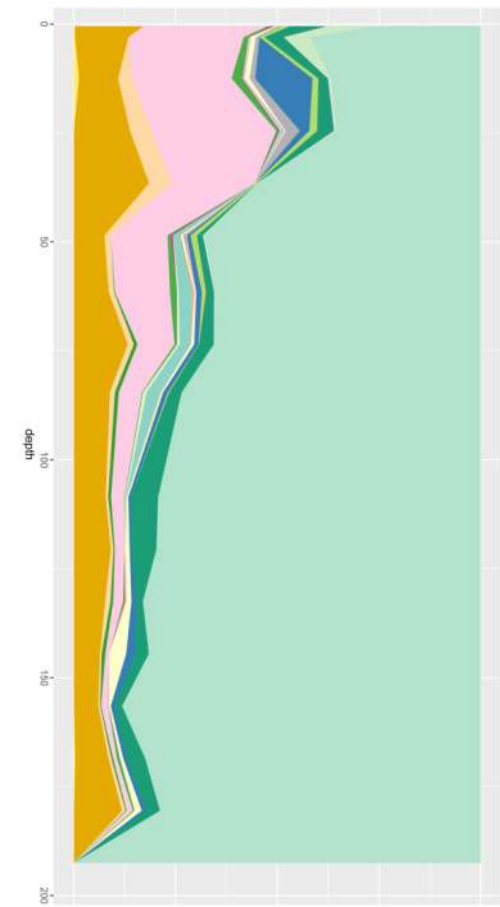
Awarua



Bayswater



Dunearn



Wetland Assessment and Monitoring Tool (WAAM)

<http://ltel.landcareresearch.co.nz/research/conservation-palaeoecology/waam>



Funding provided by



**MINISTRY OF BUSINESS,
INNOVATION & EMPLOYMENT**
HĪKINA WHAKATUTUKI