



Manaaki Whenua  
Landcare Research

# Collaboration with Māori

Working together for healthy wetlands

Mahuru Wilcox, Yvonne Taura, Cheri van Schravendijk-Goodman

# Ko wai mātou? Who are we?

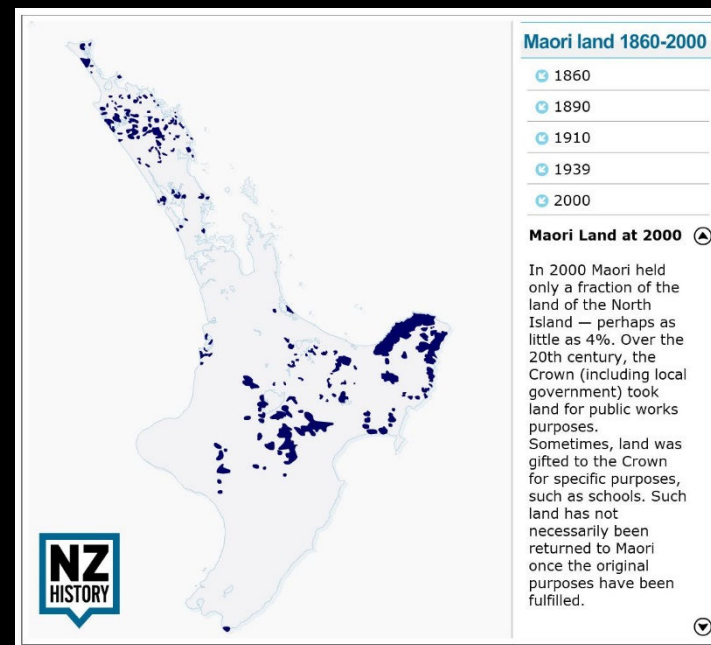
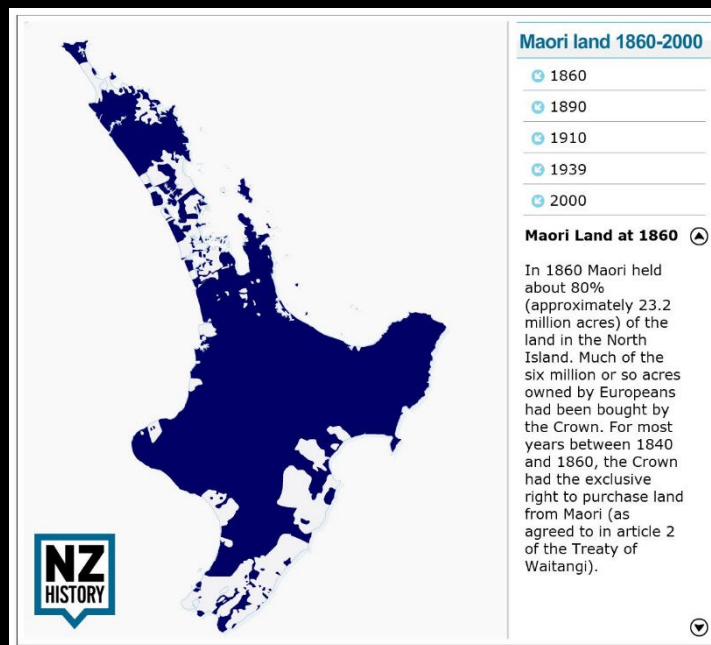


- We have been working with Māori in the science interface space as CRI researchers, consultants and iwi reps
- Policy, collaboration, science-mātauranga interface, in all habitats!

# Some important context



- Land loss (NI iwi lost 96% of their lands, Ngai Tahu lost 99% of their land by 1860)

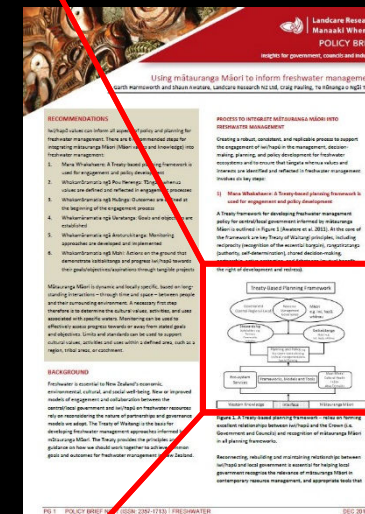
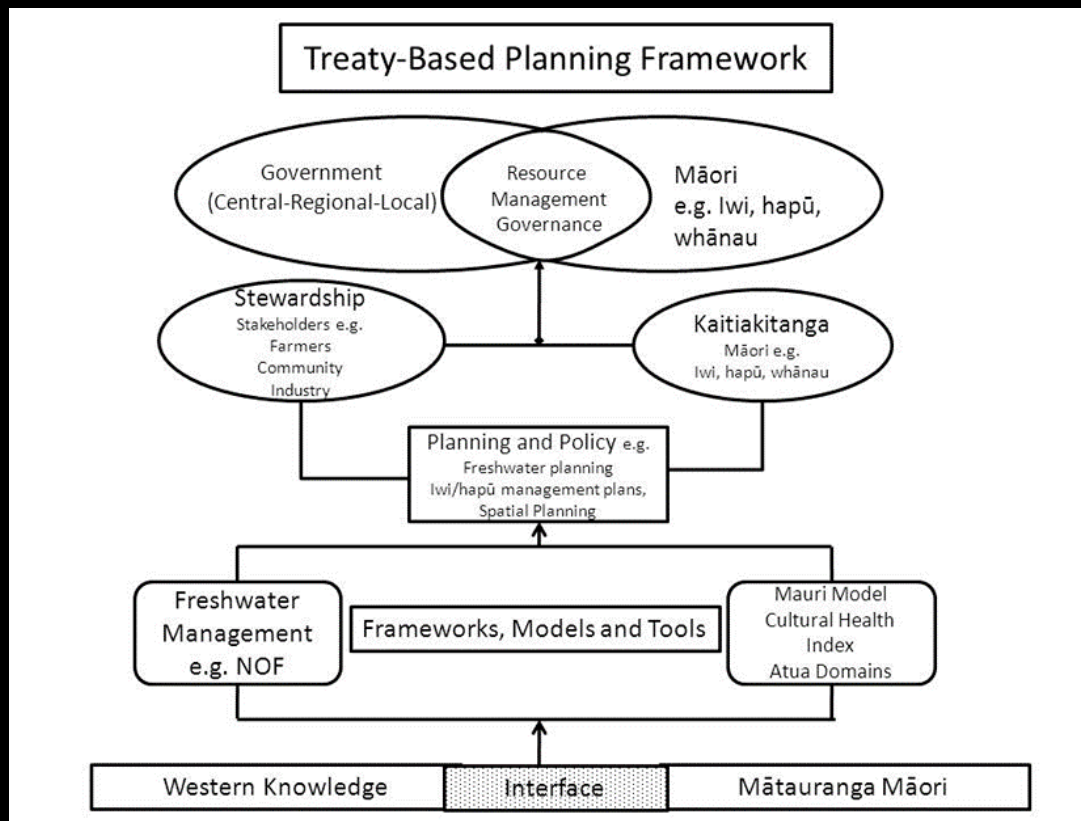




## Some important context

- Some of this loss has been redressed through settlement (very small, and often marginal land).
- This loss of land only happened 2-3 generations ago.
- The Treaty of Waitangi:

# Treaty of Waitangi Collaboration Framework



[https://www.landcareresearch.co.nz/\\_data/assets/pdf\\_file/0003/74433/Policy-Brief-7-Using-Maori-to-inform-freshwater.pdf](https://www.landcareresearch.co.nz/_data/assets/pdf_file/0003/74433/Policy-Brief-7-Using-Maori-to-inform-freshwater.pdf)



# What is collaboration?



- Everyone being heard
- Talking to the right people
- Identifying values
- Identifying common ground
- Identifying points of difference

e.g waste water consents





# What is today about?

- Working in partnership/collaboration with Māori
- What are some effective ways to do this?
- What are some key considerations?
- Overcoming challenges
- Practising via "scenarios"

# Themes



## 1. PROTECT

- There is a large new roading plan of national significance that's being proposed and includes the loss of multiple wetlands. The proposal falls within the tribal boundaries of 3 hapū that are intermittently connected through whakapapa. The road project team need to work with local iwi and ecologists.

## 2. RESTORE

- There are multiple fragmented wetlands located in a rural area prone to flooding by a nearby river. The river banks and nearby land are set aside as a council reserve. The council wants to restore some wetlands and make a public park and access tracks.

## 3. RECREATE

- There is a large industrial development and a mitigation plan has been written by a consultancy. A nearby site has been chosen as a site to recreate a wetland, and the local land-care group want to start earthworks and get planting as soon as possible.