



**SINCLAIR  
WETLANDS**  
Te Nohoaka o Tukiaua

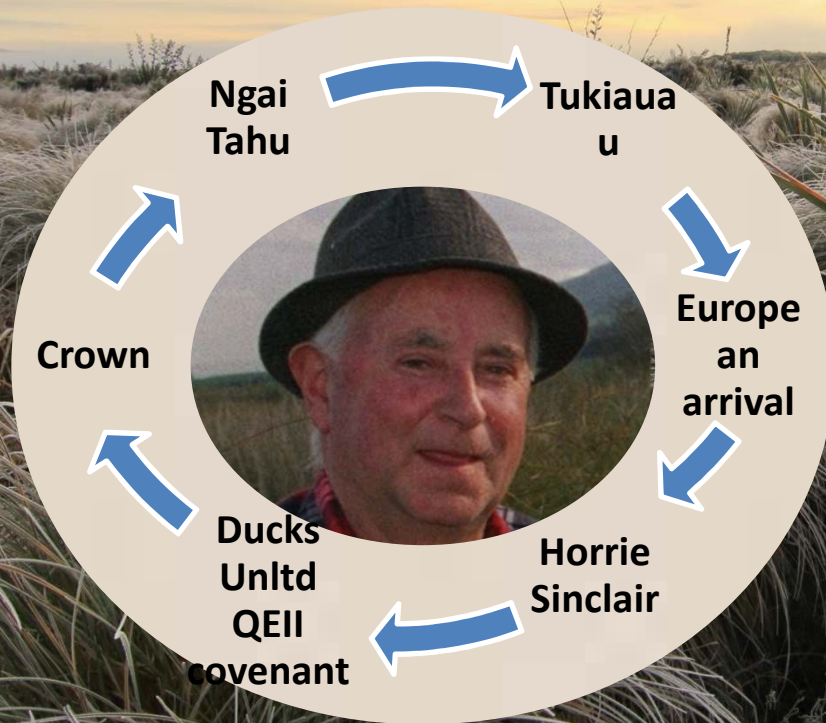
**Our restoration stories – Glen Riley**  
***Without habitat we have nothing***  
***Te Whakahaumanu o te taiao***







# Land Use







## Our Purpose

- Protect and enhance
- Healthy habitat and ecologically diverse
- Connections to the land, education, hands-on experiences and Mahinga kai opportunities



315ha



# Ecological Restoration

## 1. Take out the things that don't belong

*Pest control*

*Weed control*

## 2. Put in the things that belong

*Restoration plantings (habitat)*

*Te whakahaumanu o te taio*





# Implementation

**Coordinator 2013**

**315 hectares**

**Restoration Plantings**

**Pest Control**

**Weed Control**

**Education/engagement**

**Projects**

**2.5 days**





# Volun-tourism

*'doing volunteer work while travelling'*



Help Exchange  
Workaway

International Student Volunteers





# Volunteers

- Locals
- Businesses
- Clubs

**B**e fun

**U**n complicated

**Y**ou have been (or others)

**I**nteresting

**N**on repetitive

**S**atisfying & safe!











# Restoration Plantings

- Vision, goals
- Plant knowledge
- Site selection, site knowledge, including pests and weeds .
- Site Preparation
- Source of plants
- Passionate planting and protection team
- Dedicated maintenance

***“Without habitat we have nothing”***













<b>Year</b>	<b><u>2013</u></b>	<b><u>2014</u></b>	<b><u>2015</u></b>	<b><u>2016</u></b>	<b><u>2017</u></b>	<b><u>2018</u></b> <b><u>(August)</u></b>	<b><u>Total</u></b>
<b>Natives Planted</b>	<b>1237</b>	<b>2502</b>	<b>4509</b>	<b>5433</b>	<b>4586</b>	<b>5461</b>	<b>23,728</b>







# Weed Control





### Key Threats:

- Willow (crack and grey)
- Glyceria
- Gorse
- Broom
- Pine
- Grasses etc











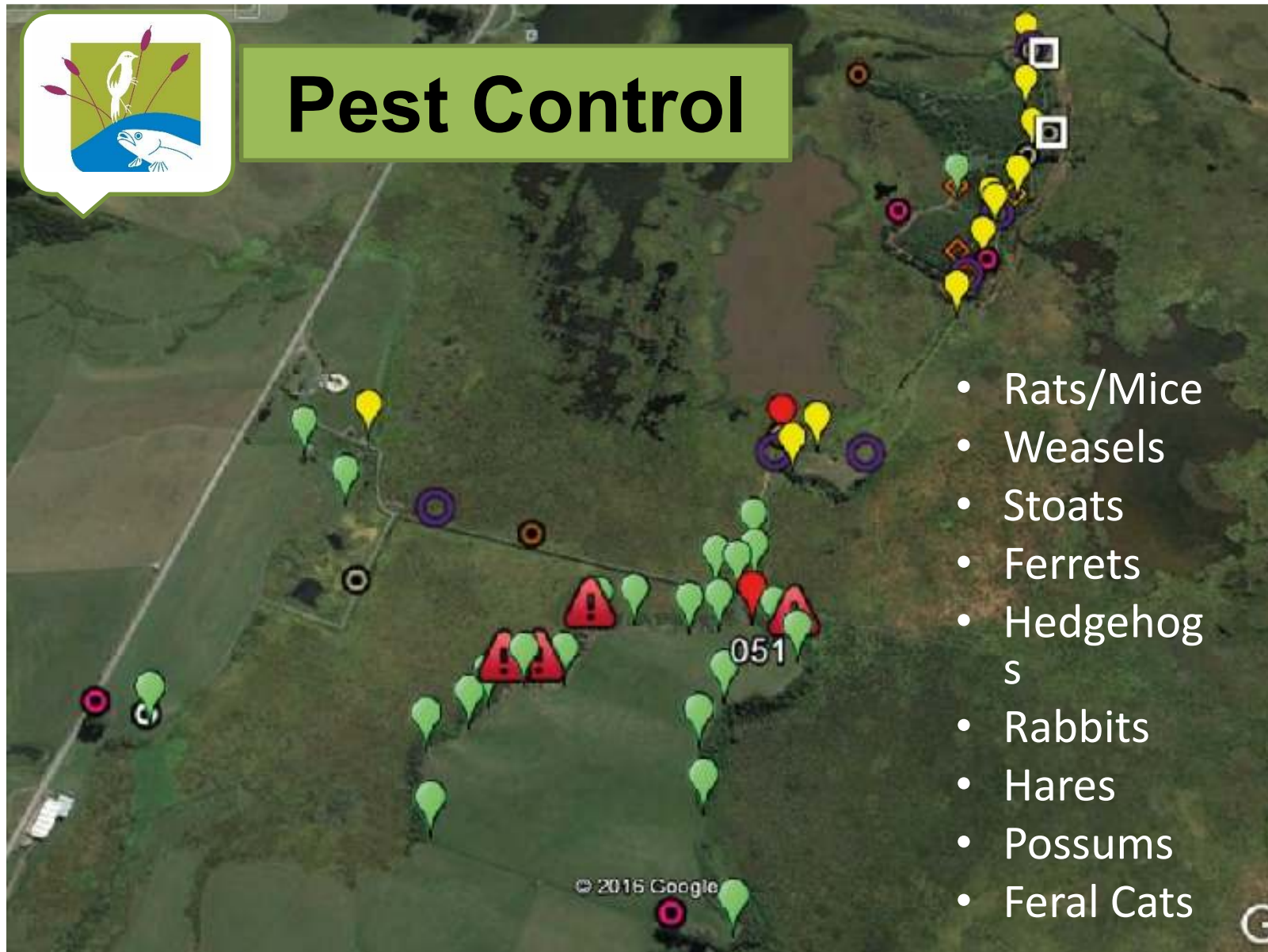








# Pest Control





# Predators Destroyed

	<u>2013</u>	<u>2014</u>	<u>2015</u>	<u>2016</u>	<u>2017</u>	<u>2018</u>	<u>Total</u>
Possums	24	20	12	22	20	3	101
Weasels	9	8	3	1	14	9	44
Stoats	17	17	9	9	21	19	92
Ferrets	3	7	2	2	3	2	19
Cats	0	4	0	10	15	5	34
Hedgehogs	13	9	7	13	21	6	69
Rats					38	17	55





## Partnerships & Sponsorship



Te Rūnanga o NGĀI TAHU



Department of Conservation  
*Te Papa Atawhai*



Back to Nature  
tours



# PAN PAC<sup>®</sup>

PAN PAC FOREST PRODUCTS (OTAGO) LIMITED





# Projects











# Research



UNIVERSITY  
of  
**OTAGO**  
*Te Whare Wānanga o Ōtāgo*  
NEW ZEALAND

**CURIOUS  
MINDS**

HE HIRI | TE MAHARA



*Birds New Zealand*







# Education & Engagement



**2017**

**699 School Children  
728 group volunteers  
75 resident volunteers**



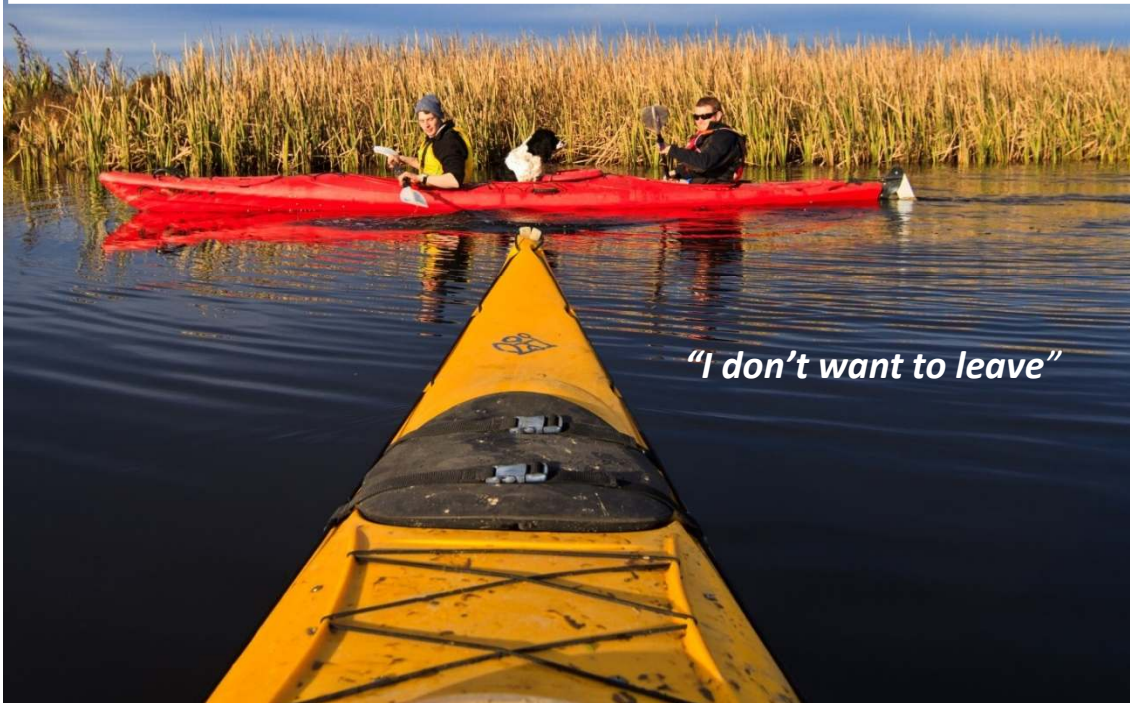
- 
- Logo
  - GIS Maps
  - Health & Safety planning
  - Carpentry
  - Fencing
  - Web Design

Year	<u>2013</u>	<u>2014</u>	<u>2015</u>	<u>2016</u>	<u>2017</u>
Vol hrs	705.5	1761	2877	4209	4457





***"I wish we had more time to volunteer because I loved every bit of this experience"***



***"I don't want to leave"***







[www.tenohoaka.org.nz](http://www.tenohoaka.org.nz)

[www.sinclairwetlands.org.nz](http://www.sinclairwetlands.org.nz)

[coordinator@sinclairwetlands.org.nz](mailto:coordinator@sinclairwetlands.org.nz)



**SINCLAIR  
WETLANDS**  
Te Nohoaka o Tukiauau