

An Introduction to Greater Wellington Regional Council's: Wetland Programme

Aprille Gillon, Biodiversity Advisor - Wetlands



Prepared for the 2018 National Wetland Restoration Symposium

Outline

- Objective
- Programme deliverables
- Progress
- Case studies
- Behaviour change



Objective

To advise, assist and incentivise landowners with natural wetlands on their properties to restore and manage them



What does the programme deliver?

Advice and guidance to private landowners with natural wetlands on their property including:

- Financial incentives for restoration activities
- Development of Restoration Management Plans (RMP's)
- Training to encourage and upskill landowners to undertake restoration work
- Restoration resources

Advice and guidance

- Wetland restoration
- Wetland rules in the Proposed Natural Resources Plan



Financial incentives

Restoration Activity	Wetland Programme funding* available
Fencing to prevent stock access	Up to 50% of agreed total cost for materials and labour.
Pest plant control	Up to 100% for total cost (maximum \$5,000 per year for three years). This can include pre- and post- spot spraying for planting.
Planting of eco-sourced native plants	Up to \$1,000 per year for 3 years to cover plants and associated materials (e.g. plant protectors).
Pest animal control	Traps/bait stations available for landowners to purchase at cost.

* Funding is on a case-by-case basis at Biodiversity Advisor discretion

Restoration Management Plans

- Identify the location and values of a site
- Outline the threats to these values
- Describe the restoration activities proposed at a site
- Identify those responsible delivering each task
- Identify the sources of funding
- Determine a timeframe for delivery

Restoration Management Plans

<u>Non-statutory</u> Restoration Management Plans can include activities that don't require resource consent, such as:	<u>Statutory</u> Restoration Management Plans include activities* that require resource consent, such as:
Fencing	Pest plant control by aerial methods
Planting appropriate indigenous wetland species	Earthworks/changes to wetland hydrology
Control of appropriate pest plants using approved agrichemicals and non-aerial methods	
Pest animal control	

*Provided they are for the purpose of restoration.

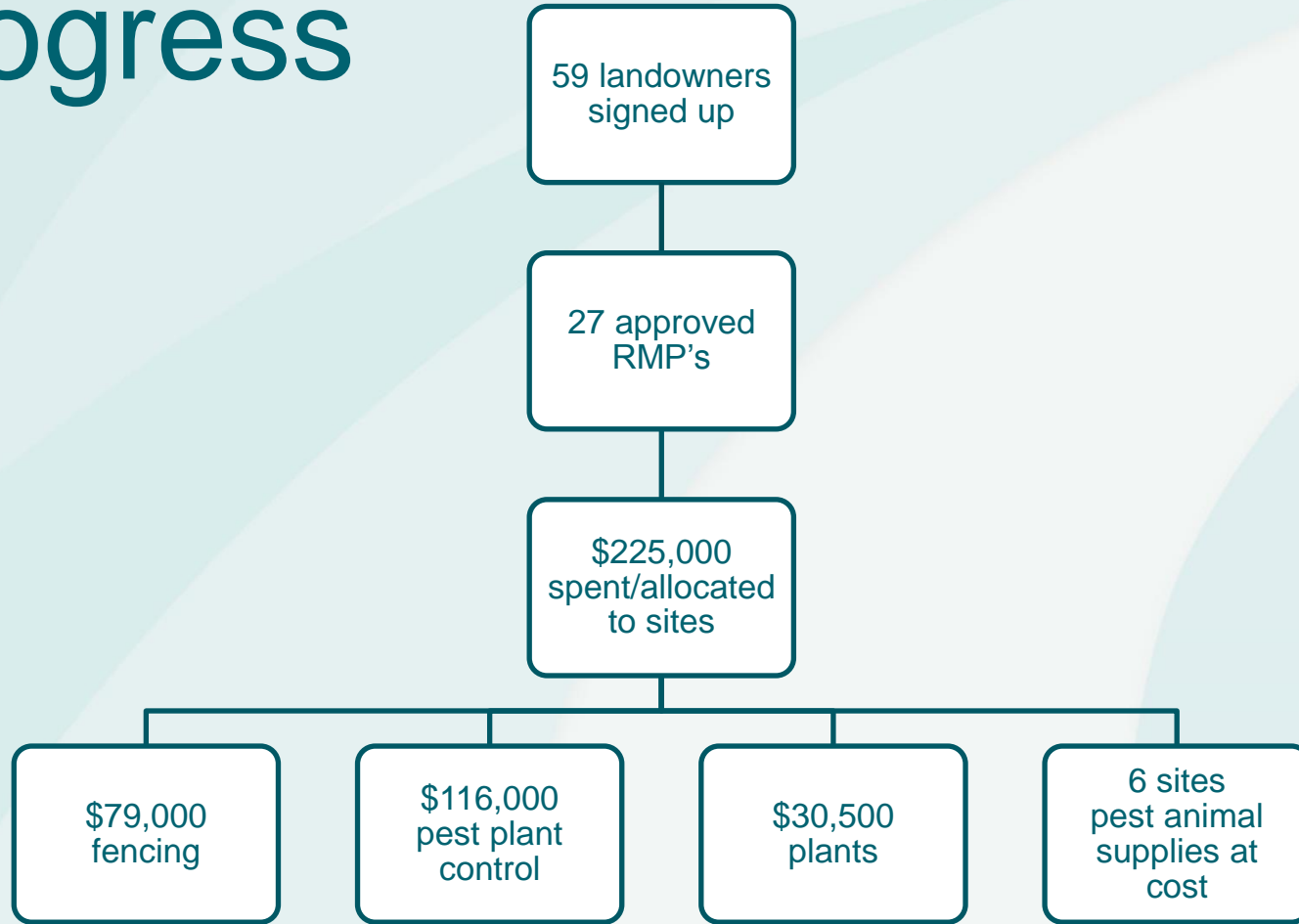
Training/networking events

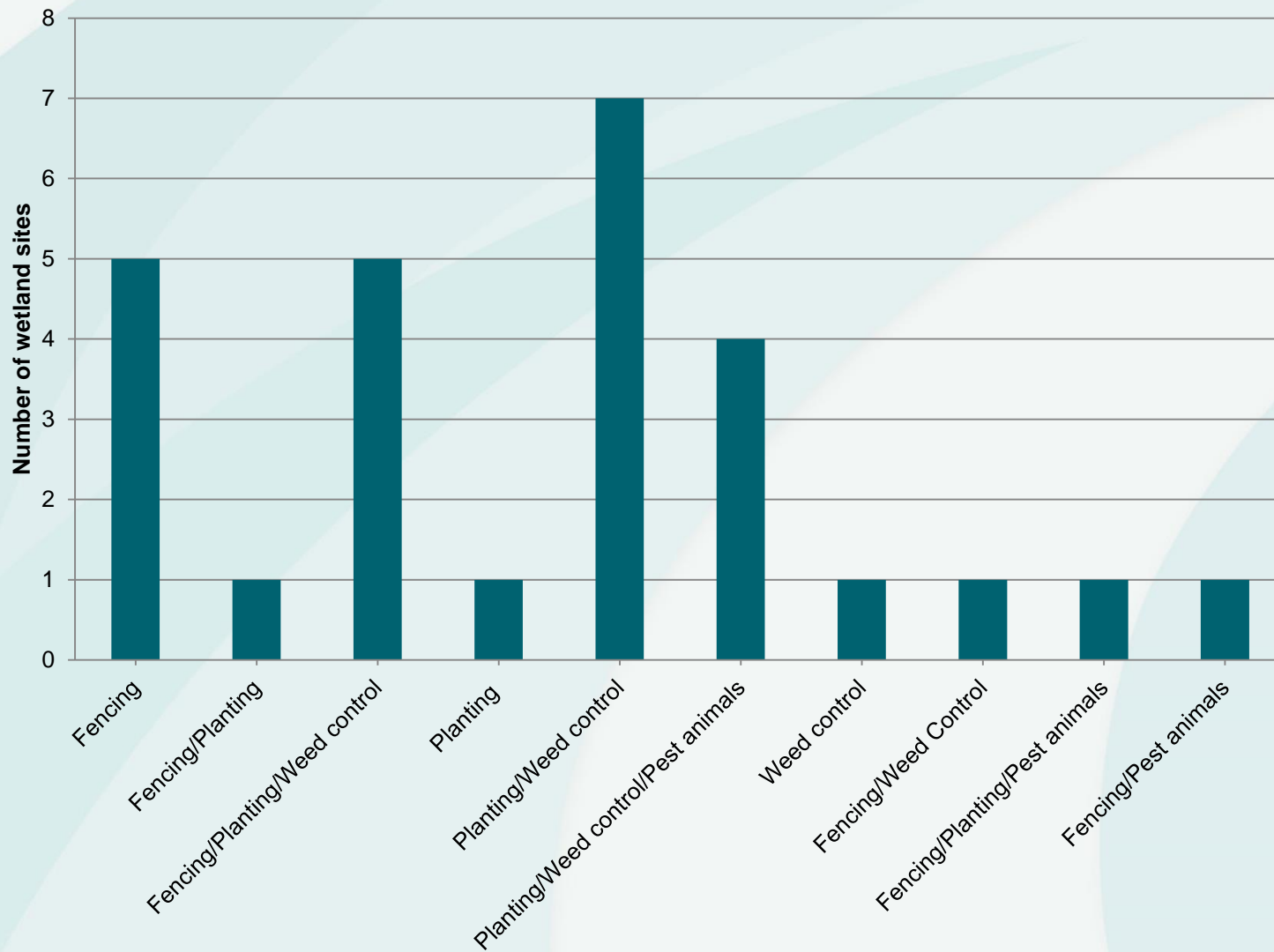


Restoration resources



Progress



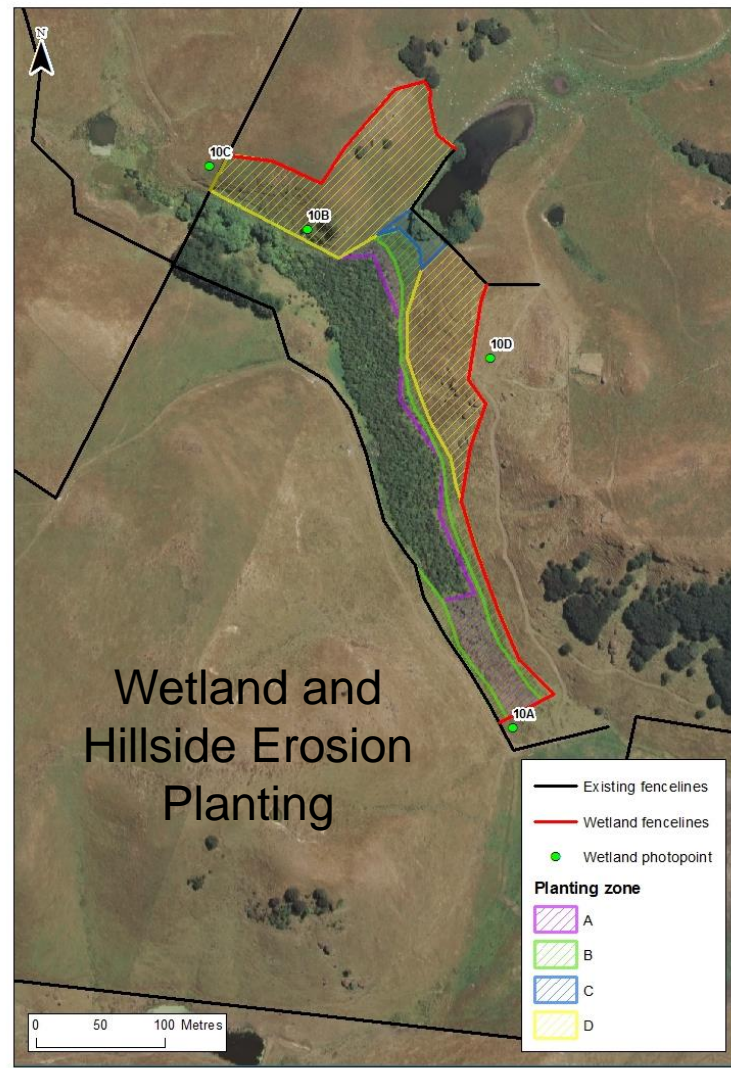
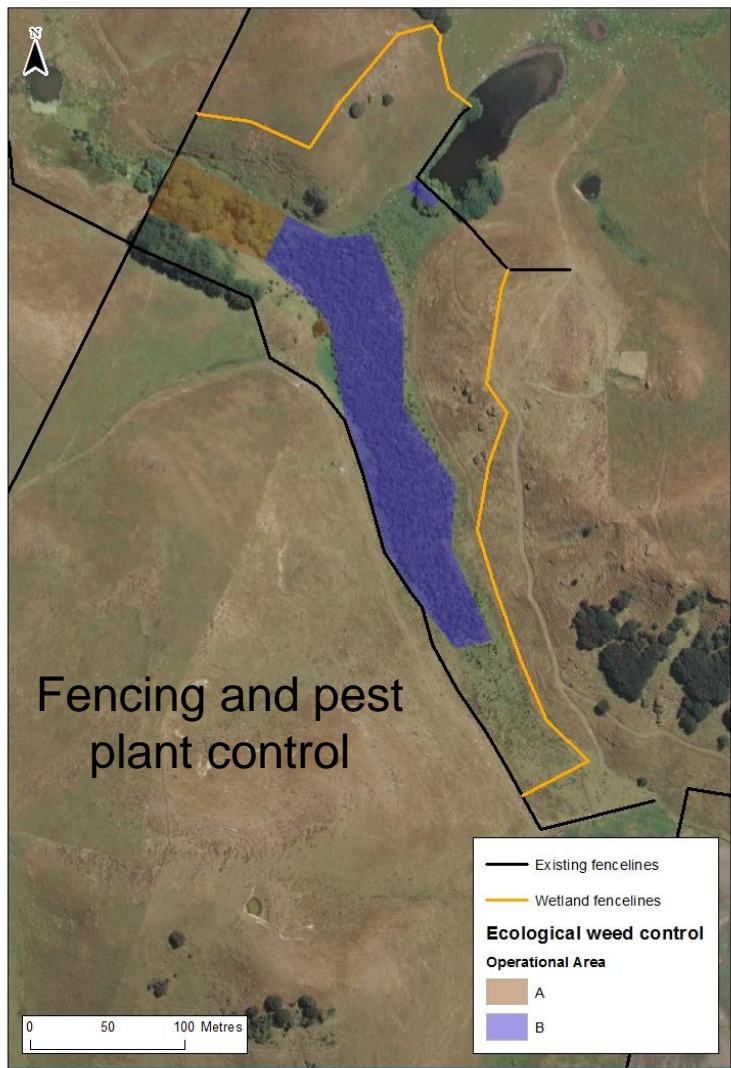


Restoration activity funding through the Wetland Programme

D Cook wetland



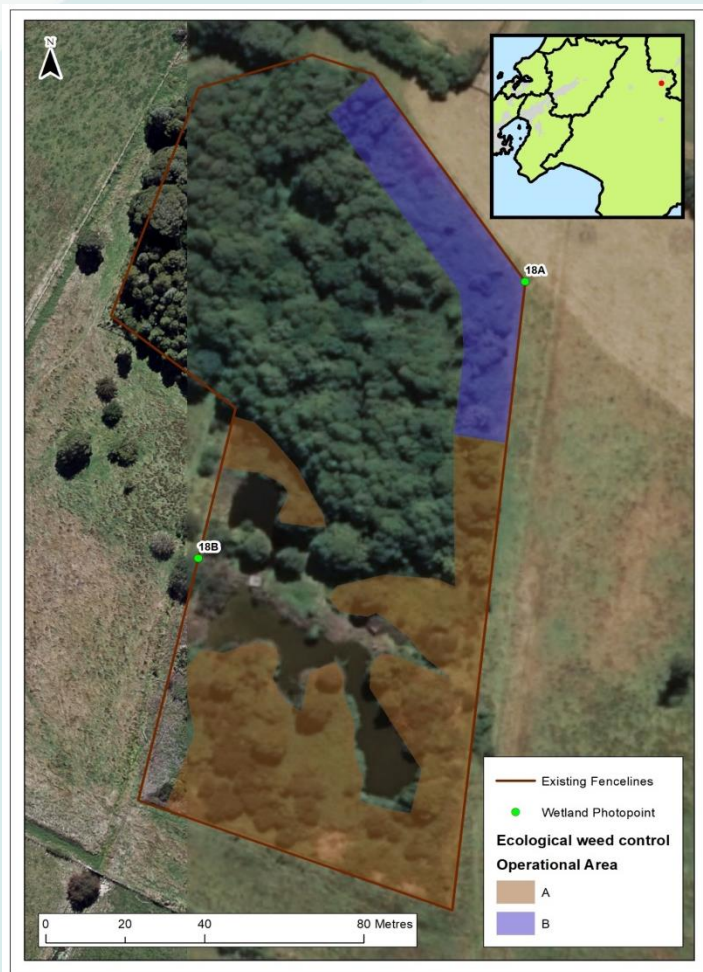
- 3.0 ha palustrine swamp near Masterton
- *Olearia virgata* and *Coprosma propinqua* shrubland
- Key threats: ecological weeds and stock



Elm Grove Wetland



- 1.6 ha palustrine swamp in Greytown
- Manuka/*Juncus sarophorus* shrubland, *Cyperus ustulatus*-*Machaerina rubignosa* and *Carex geminata* sedgeland, kahikatea-manuka-harakeke scrub
- Key threats: ecological weeds and pest animals



Programme Engagement - Behaviour Change

Stage	Description	Score	Percentage of wetlands
No	Landowner is not willing to engage in the programme	1	12%
Yeah... But	Landowner indicates willingness but presents barriers as to why they can't	2	21%
OK	Landowner accepts that they will take action	3	15%
Action	Landowner commences implementation	4	4%
Maintenance	Implementation complete, some follow up required	5	14%
No stock/Fencing in place	-	6	25%

Thank you

- Any questions?

