



Wetlands and farming on the side of a lake

Philippa Crisp, Environmental Science

GW new policy- proposed Natural Resources Plan

By 31 July 2019

- No livestock access in outstanding scheduled wetlands
- No livestock access in significant scheduled wetlands, except for sheep

Scheduled wetlands

- Wetlands identified a few years ago using existing data and some field surveys
 - 15 outstanding
 - 196 significant
- Number wetlands already fenced or in areas without stock

Ease of fencing



greater WELLINGTON
REGIONAL COUNCIL
Te Pane Matua Taiao

JK Donald Reserve



- Large size – 250ha
- Vegetation largely exotic
- Impact of grazing removal
- Hydrological issues

Setting – Wairarapa Moana



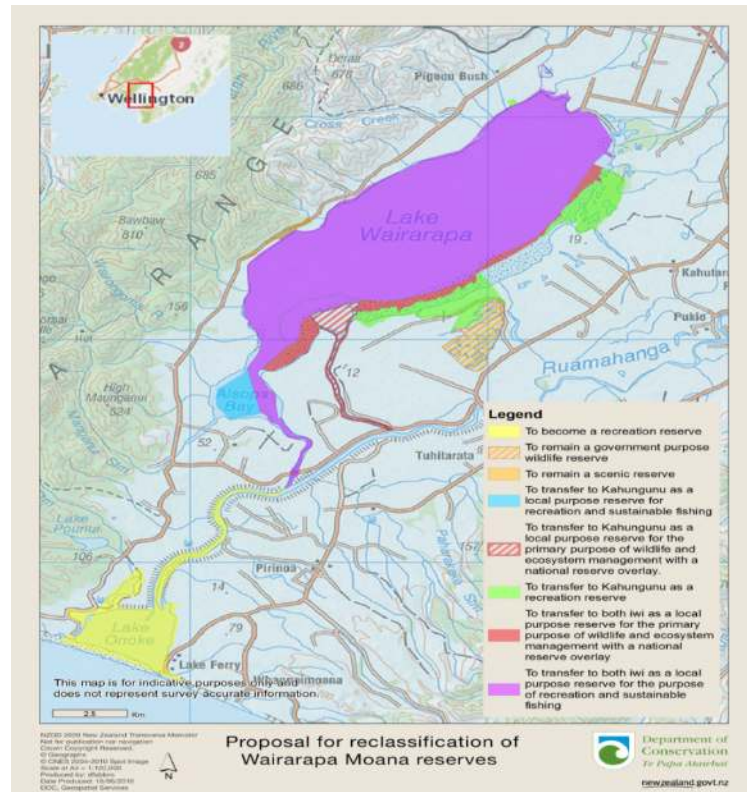
Ramsar site nominee

Meets 7 of the 9 criteria for Ramsar status



great
REGIONAL COUNCIL
Te Pane Matua Taiao

Treaty Claim

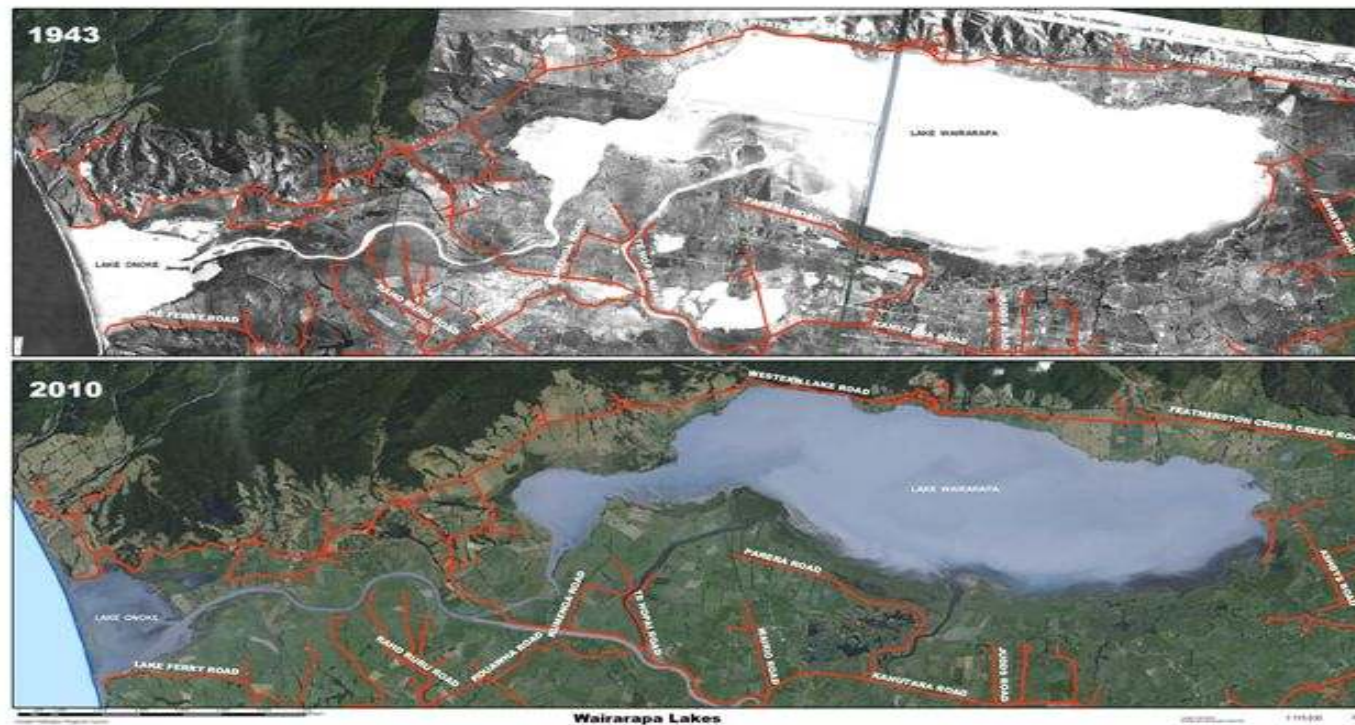


Joint redress for two Iwi: Ngati Kahungunu and Rangitane

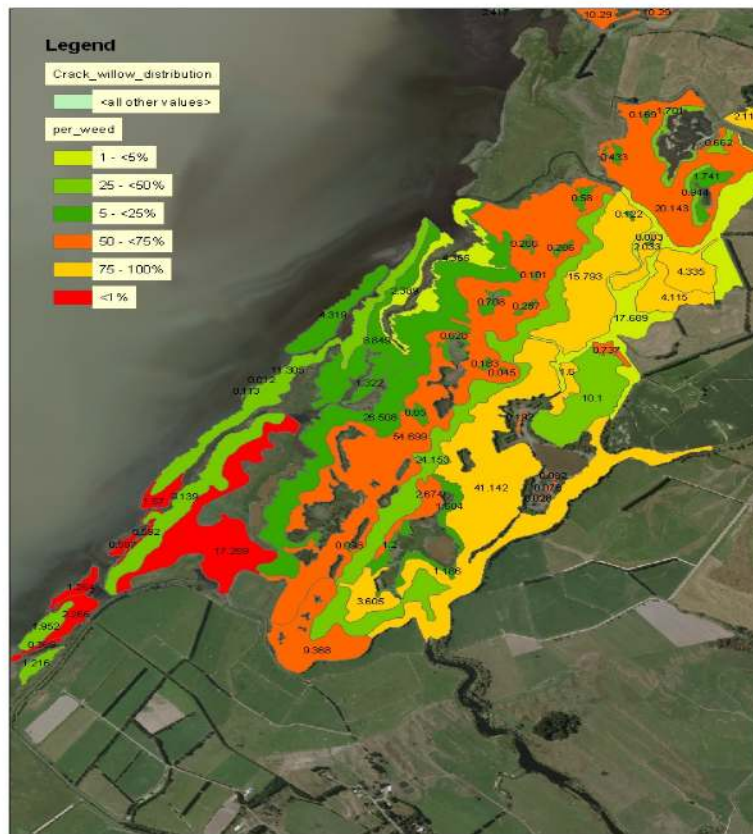
Wairarapa Moana Statutory Board to be established

Indicative reserve reclassification

Drainage scheme



Weed issues



Alder

Crack willow

Grey willow

Tall fescue

Current vegetation



Restoration options plan

- GW and DoC contracted Wildlands to develop a restoration options plan
- Aim was to identify ecological restoration options, considering:
 - Hydrological changes
 - Plantings
 - Weed control
 - Grazing removal

Process

- Gathered stakeholders together – farmer (lessee), Iwi, Fish and Game to identify goals/concerns
- Re-mapped the vegetative communities (last mapped 5 years ago)
- Produced draft plan, obtained feedback and met again with stakeholders

Management zones



1: Rushland

2: Dryland indigenous forest

3: Wetland indigenous forest



Juncus sarophorus



Outcomes



Grazing removal areas
Prioritised

Recommendations for:

- hydrological enhancements
- plantings
- weed control

Next steps

- Finalise restoration options report
- DoC to make decision about a managed grazing retreat – resource consent required
- Iwi have offered to work with grazing lessee