



Managing Our Drains for Biodiversity Values



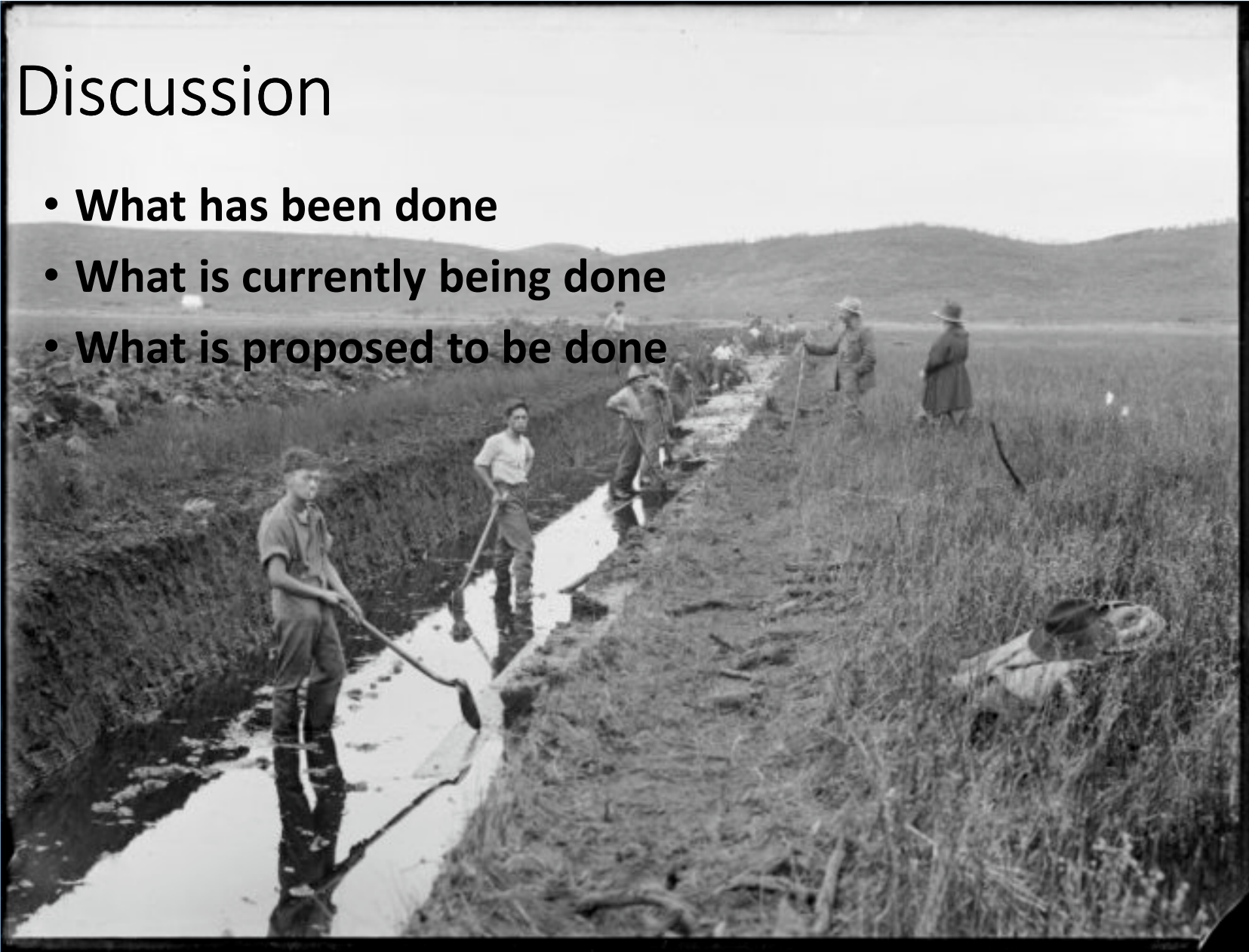
Drain Management Goals

- **Maintain drain function for agricultural purposes while enhancing the biodiversity.**
- **Can we have our cake and eat it too?**
- **Drains**
 - **Default wetlands**
 - **Habitat for invertebrates, plants, fish and birds**



Discussion

- What has been done
- What is currently being done
- What is proposed to be done



Objectives

- **Develop a drain management working group**
- **Identify research needs**
- **Commitment from participants to trial methodologies**
- **Open communication between managers of drains**

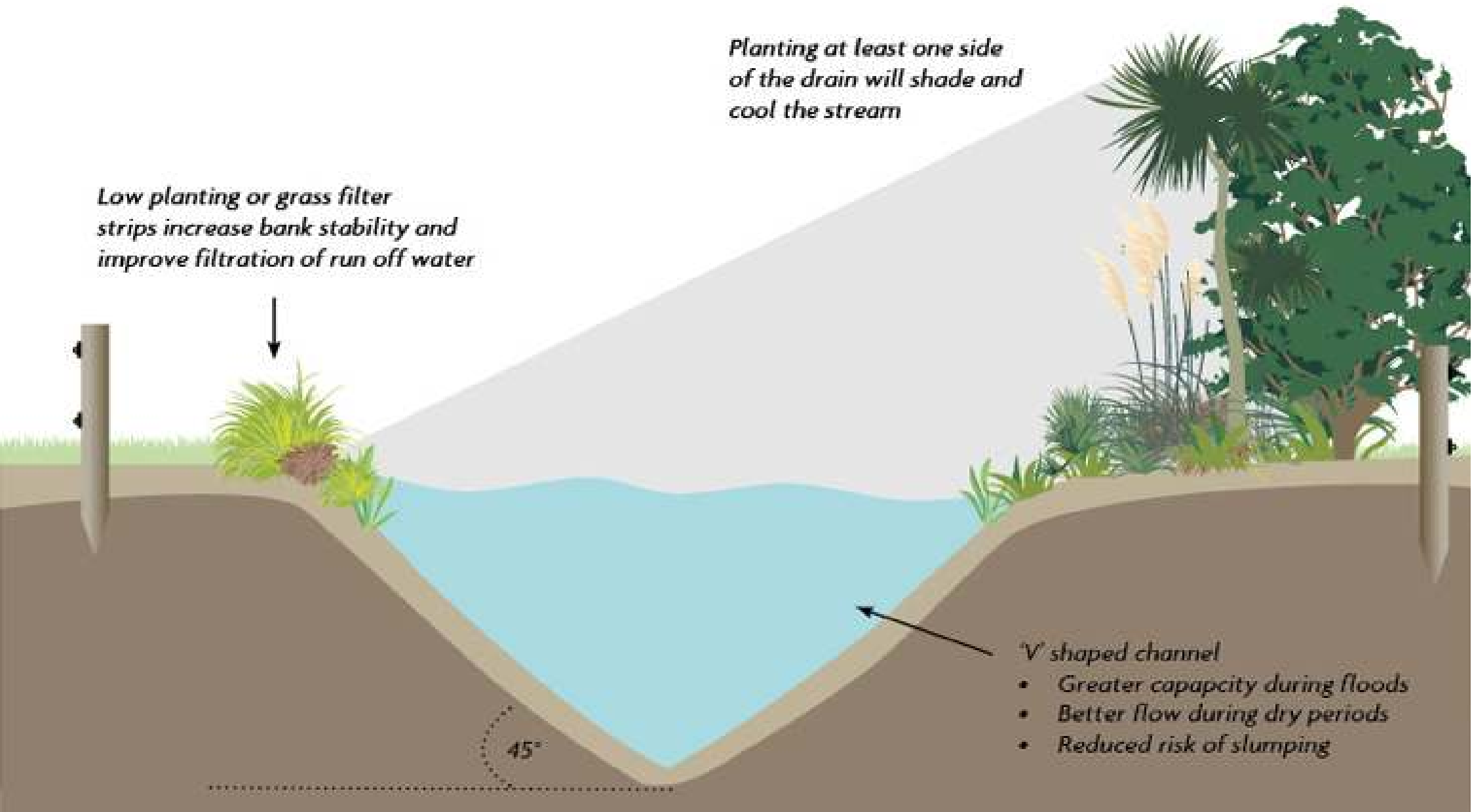


Waikato Peat Lakes



Planting at least one side of the drain will shade and cool the stream

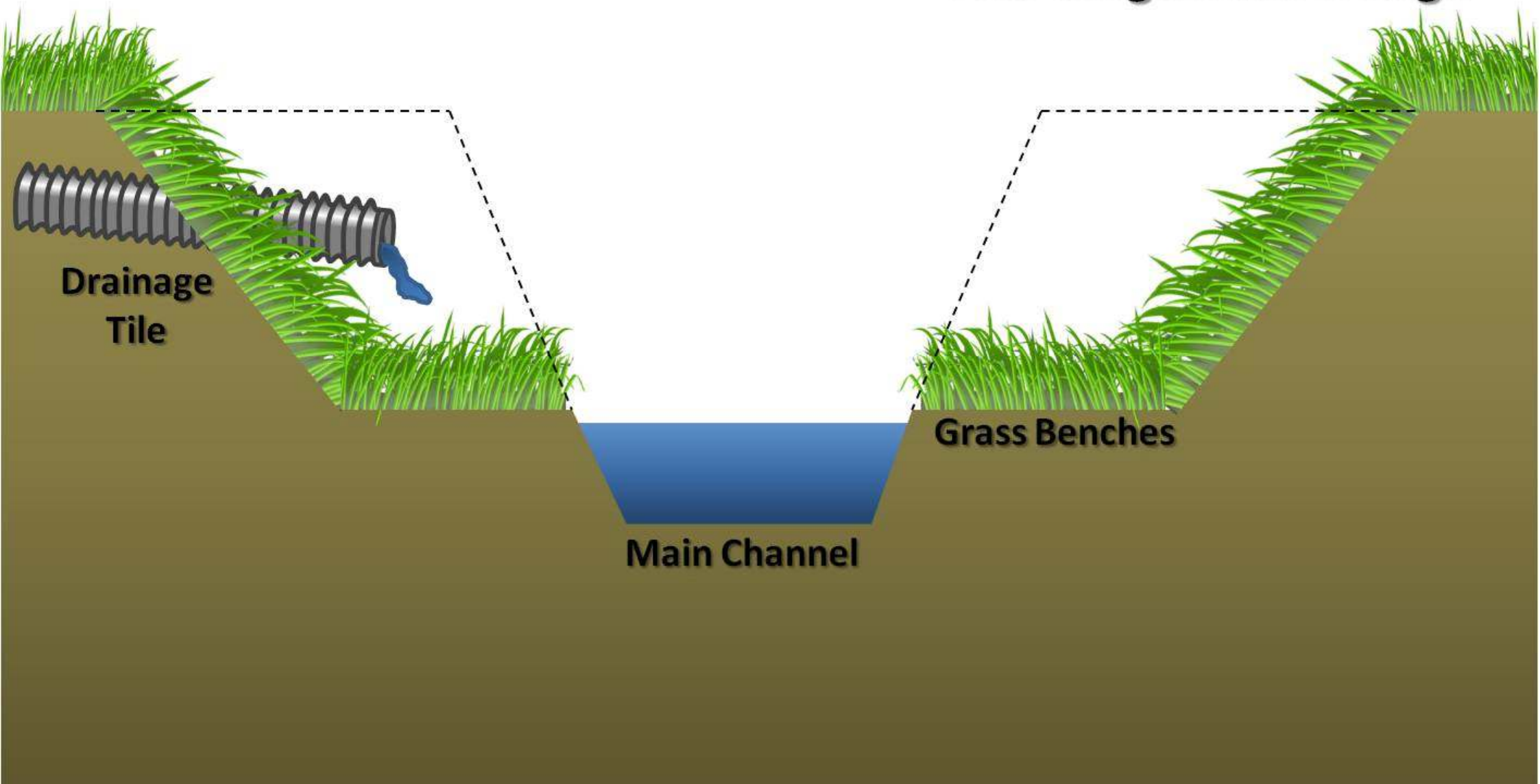
Low planting or grass filter strips increase bank stability and improve filtration of run off water



'V' shaped channel

- *Greater capacity during floods*
- *Better flow during dry periods*
- *Reduced risk of slumping*

Two-Stage Ditch Design

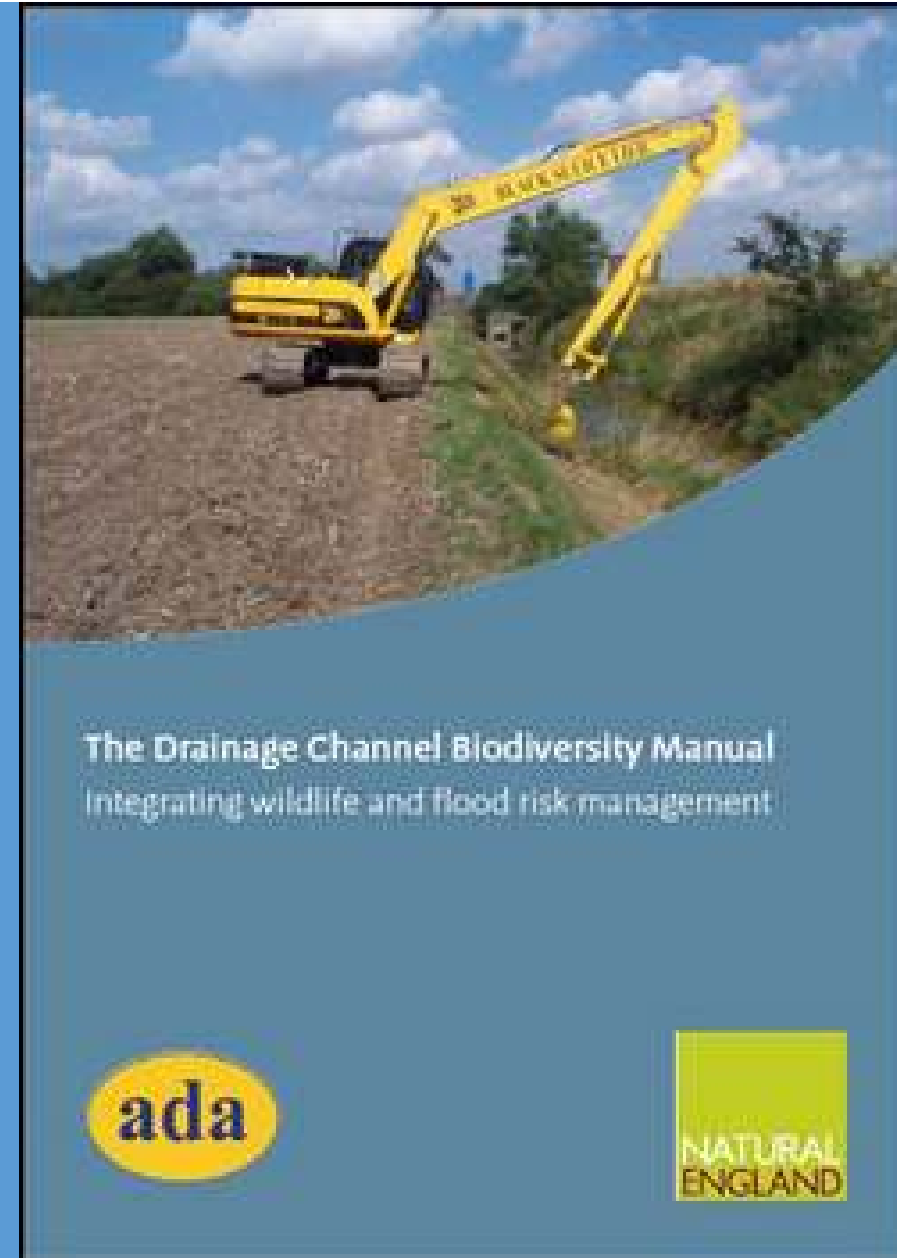


Information Sources (NZ)

- **Dairy NZ Waterway Technical Note – Drains**
- **Sustainable drainage Management – field guide (NZWERF)**
- **Sustainable Drain Management in Selwyn –Waihora**
- **Best Practice Environmental Guidelines – Land Drainage (Envir. Waikato**

Information Sources

- **The Drainage Channel Biodiversity Manual: Integrating Wildlife and Flood Risk Management – Natural England**



Where Do We Go From Here?

