

Securing the “Public Good” in Freshwater Wetlands

A J (Tony) Roxburgh
 Manager Community Facilities
 Waipa District Council



Presentation Summary

- ◆ Provide legislative context
- ◆ The issues surrounding wetland conservation (Waipa focus)
- ◆ Importance of Territorial Authorities being engaged
- ◆ Describe wetland resource of the Waipa District
- ◆ Initiatives taken within the Waipa District to secure wetlands

Legislative Responsibilities

- ◆ Local Government Act 2002 requires Territorial Authorities to:
 - Ensure prudent stewardship
 - Ensure efficient and effective use of resources
 - Adopt a sustainable management approach in maintaining and enhancing the environment
 - Meet community outcomes for natural heritage
- ◆ RMA (Section 31) requires TA's to:
 - Manage the effects of the use, development and protection of land and associated natural and physical resources through implementation and review of policy and rules
 - Control effects of land use for, amongst other things, the maintenance of indigenous biodiversity

Issues Surrounding Wetland Conservation in Waipa

- ◆ Wetland are not generally recognised as significant contributors to healthy, diverse, aesthetically pleasing landscapes
- ◆ You cannot protect / maintain viable wetlands in isolation of their catchments. No Catchment Management Plans and poor alignment with Regional Plans
- ◆ Significant percentage of remaining wetlands are on private land and we lack incentives to encourage protection
- ◆ The use of land is intensifying, land prices are increasing and investment in development is preventing the reinstatement of wetlands
- ◆ We lack wetland advocates, people passionate about wetland conservation or aware of threats to wetlands

Why Engage Local Authorities

- ◆ Responsible for planning and policies around the use of land and managing the effects of land use
- ◆ District Plans can be supportive of Regional Policy and Regional Plans, if the agencies collaborate
- ◆ Have the ability to control activities and works that will adversely impact on other land use, adjoining land, valued sites or features etc.
- ◆ Have the ability to negotiate environmental outcomes

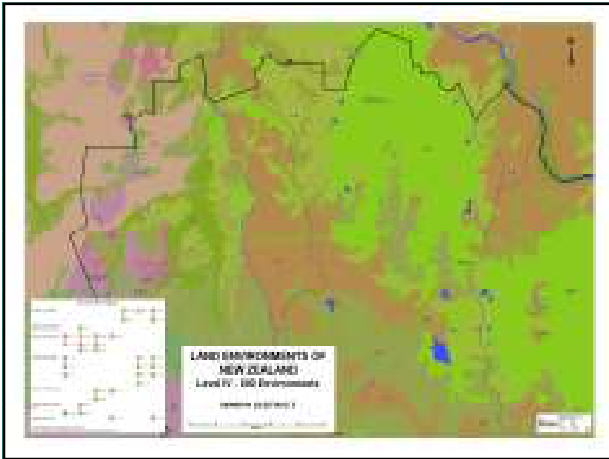




Wetland Resource in Waipa

**1 remaining peat bog -
114ha Moanatuatua
Scientific Reserve**

**17 peat lakes and an
additional 27ha
adjoining Reserve**



Initiatives Taken to Secure Wetlands

1. Waipa Peat Lakes Accord
2. Offering Incentives
3. Proactive Purchase of land for Access and Buffer Margins
4. Environmental Strategy

1) Waipa Peat Lakes and Wetlands Accord

- ◆ **Purpose:** Align the activities of management agencies .. towards restoration and enhancement of lakes and wetlands
- ◆ **Partners:** Waipa DC, Regional Council (EW); DOC; Auckland Waiakto F&G; Ngati Apakura and Hikaio
- ◆ **Objectives:**
 - Promote the sustainable use and conservation of lakes...
 - Encourage restoration of degraded lake and wetlands
 - Maintain and overview of lake and wetland resources
 - Develop regional networks of expertise
 - Raise Awareness around wetland conservation

2) Incentives Offered

◆ Environment Protection Lots



Covenant on title (*QE II, 221 Consent Notice, or kawenata agreement*).
Landowners accepts responsibility for ongoing protection and Management of the feature

Transfer the entitlement to another property in the Waipa District

or

Council will provide a right to sub-divide one or more titles (2,500 - 5,000m²) on your property.



Potential to realise a financial return

2) Incentives Offered cont'd

- ◆ Assisting landowners financially with on-ground protection costs –survey, fencing, management
- ◆ Providing rate relief for sites protected by a covenant
- ◆ With landowner agreement, Council may purchase land for access and heritage purposes
- ◆ Assist with advice and information



3) Proactive Purchase of Land



4) Environmental Strategy

- ◆ Four key outcomes we are working towards:
 - 1) Adopted an Environmental Strategy to help secure natural assets – *applying conservation principles*
 - 2) Actively manage land (Reserves & Council owned) for conservation outcomes – *leading by example*
 - 3) Encouraging land owners and community groups to protect features on private land – *providing advise, incentives and support*
 - 4) Promoting the work being done – *effective communication*

Ten Years from Now !!

All Waipa residents understand, value and appreciate natural heritage including wetlands

Landowners are actively managing sites and features on their land with support from Council and urban communities

Residents choose to live in Waipa and tourists and visitors choose to visit because of the many heritage and quality recreational experiences offered